



# Industrial rackmount keyboard drawer with LCD monitor



Utilizing only 1U or 2U of rack space, the **DKM** series combined a keyboard with glide point touch-pad, Active Matrix LCD monitor and a pair of amplified stereo speakers in a rugged rackmount drawer. With the slide rails included, the unit can be fit to any standard rack chassis ranging from 14.5" to 36" deep. These simply save you valuable rack space to optimize and maximize the use of the rack. A short travel of 13" pull is sufficient to clear the rack and raise the LCD monitor to a comfortable viewing position. The drawer conveniently slides smoothly away when not in use.

## Analog to Digital conversion board

A built-in-smart Analog-Digital conversion board is behind the technology in interfacing the digital LCD monitor with standard analog VGA/DVI output, allowing compatibility with almost all VGA controllers. The conversion board also features an On Screen Display (OSD) for fine-tuning the display in Linux/Unix test and graphical interface.

## LCD flat panel monitor

The LCD monitor is built inside a slim and rugged aluminium housing for durability. The display mechanism is hinged so that it can be tilted to the most comfortable viewing position. LCD lay flat on top of keyboard when recessed into the drawer. An auto-shut-off switch with turn-off the power to the LCD monitor when the LCD is in recess position.



## Keyboard and Pointing Device

The keyboard is secured to the drawer and flushed in an aluminium housing. DKM SX 17 and DKM 17HD equipped standard with membrane keyboard and touch-pad mouse. DKM WR17 has water resistance rubber keyboard and pointing device. Shown on the right. DKM UX 20 has mechanical keyswitch keyboard and P/S2 mouse.

## TV Tuner Model

A special model with TV tuner built-in and remote. - 17" LCD with VGA, RCA, BNC and S-video inputs

## Power Supply and Ports

The LCD flat panel monitor is powered by a 60 W 100-240 V full-range power supply positioned at the back of the drawer with a rocker on-off switch. The keyboard, pointing device and VGA connectors are also positioned at the back of the drawer for easy access.

## Finish and Security

The DKM is available in color black with power coated finish. A key locking mechanism locks the drawer when in the full recess position, to prevent unauthorized access.

## Features:

- ◆ 1U design with 17" and 17.3" TFT LCD
- ◆ 2U design with 17" and 20" TFT LCD
- ◆ 16:9 - 1080p LCD available on certain model
- ◆ Built-in amplified speakers
- ◆ USB available on certain models
- ◆ Options with touchpad, standard PS/2 mouse or rubber keyboard
- ◆ Work with standard PCI-E video
- ◆ DVI inputs on certain models

## rack models

model	DKM SX17	DKM 17HD	DKM WR17	DKM UX 20M
Height	1U - 1.75"	1U - 1.75"	1U - 1.75"	2U - 3.5"
Width	19"	19"	19"	19"
Lengh	Adj. 16.25" - 30"	Adj. 14.5" - 24"	Adj. 16.25" - 30"	Adj. 19.5" - 35"
Weight	25 LBS	20 LBS	25 LBS	35 LBS
LCD size	17" (4:3)	17.3" W (16:9)	17.3" (16:9)	20.1" (4:3)
reponse	6ms	8ms	8ms	16ms
Resolution	1280 x 1024	1920 x 1080	1600 x 900	1600 x 1200
LCD colors	16M	262 K	262 K	16M
Luminance	300 cd/m <sup>2</sup>	300 cd/m <sup>2</sup>	200 cd/m <sup>2</sup>	250 cd/m <sup>2</sup>
constrast	700:1	400:1	400:1	700:1
Video input	VGA, DVI	VGA, DVI	VGA, DVI	VGA, DVI
interface	PS/2	PS/2, USB	PS/2	PS/2
Mouse type	Touch pad	Touch pad	Rubber KB & mouse	Std.mouse
speakers	yes			

## Environment

Température	0° to 40°C (Operating) / -20° to 60°C (storage)
Humidity	10% - 90% non-condensing
Oper.Altitude	0 ~ 3 000m or 10 000 ft

## DKM SX 17



# Industrial rackmount keyboard drawer with LCD monitor

**DKM 17 HD**

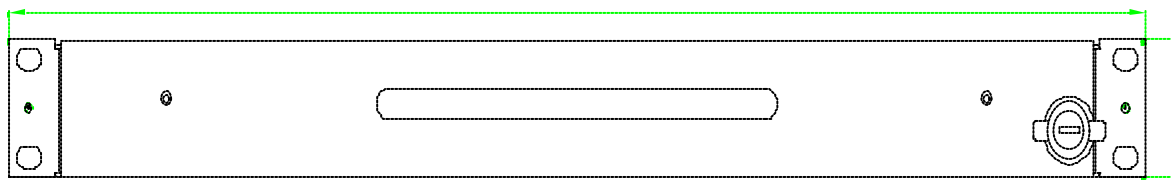
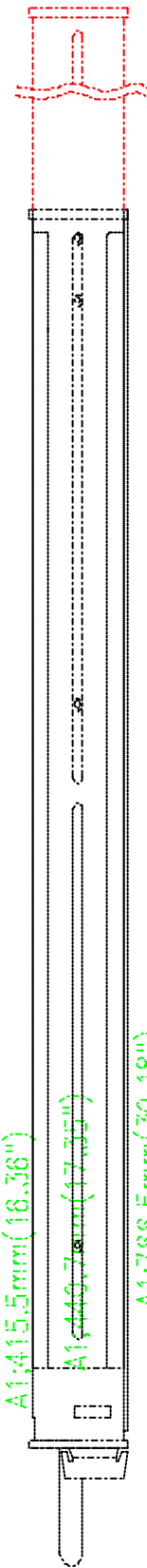
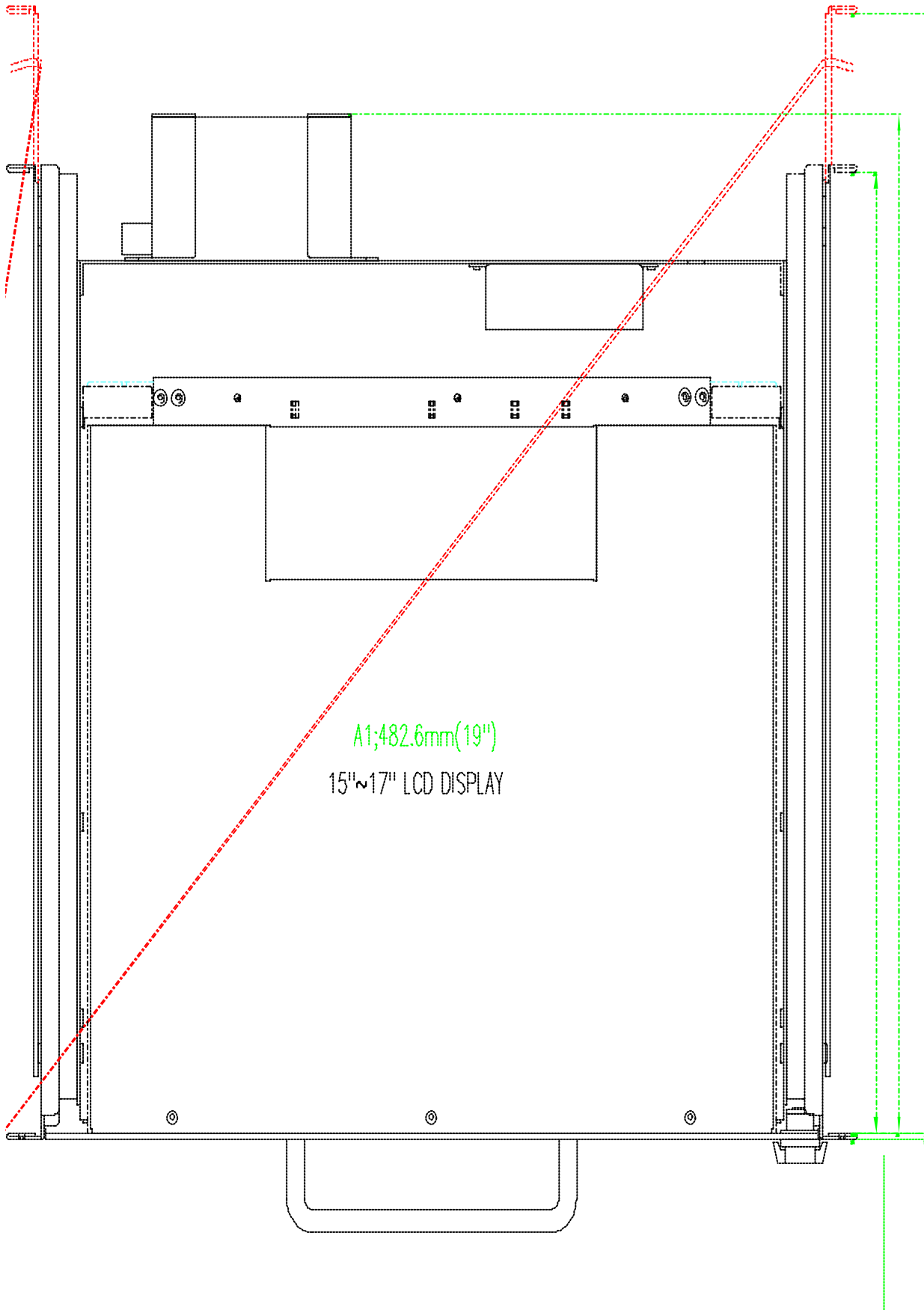
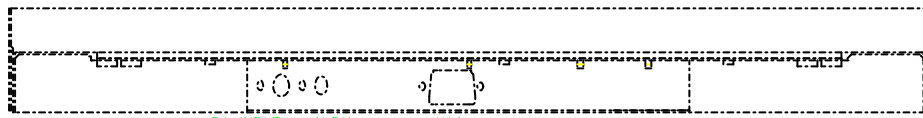


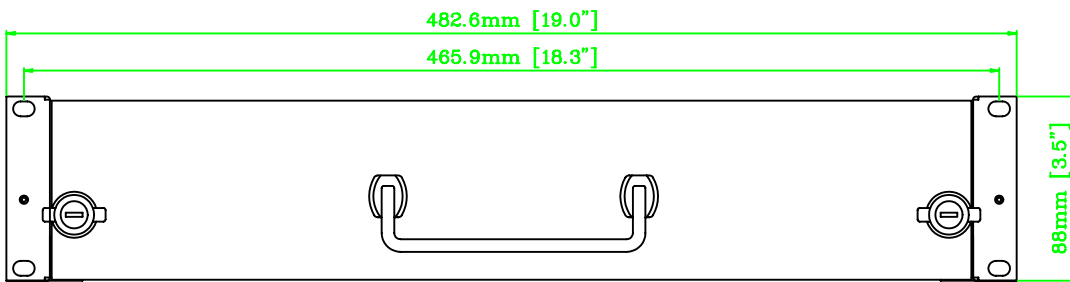
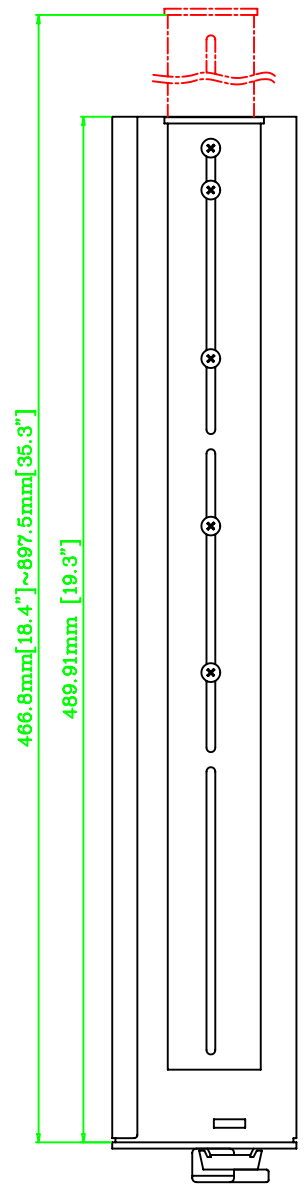
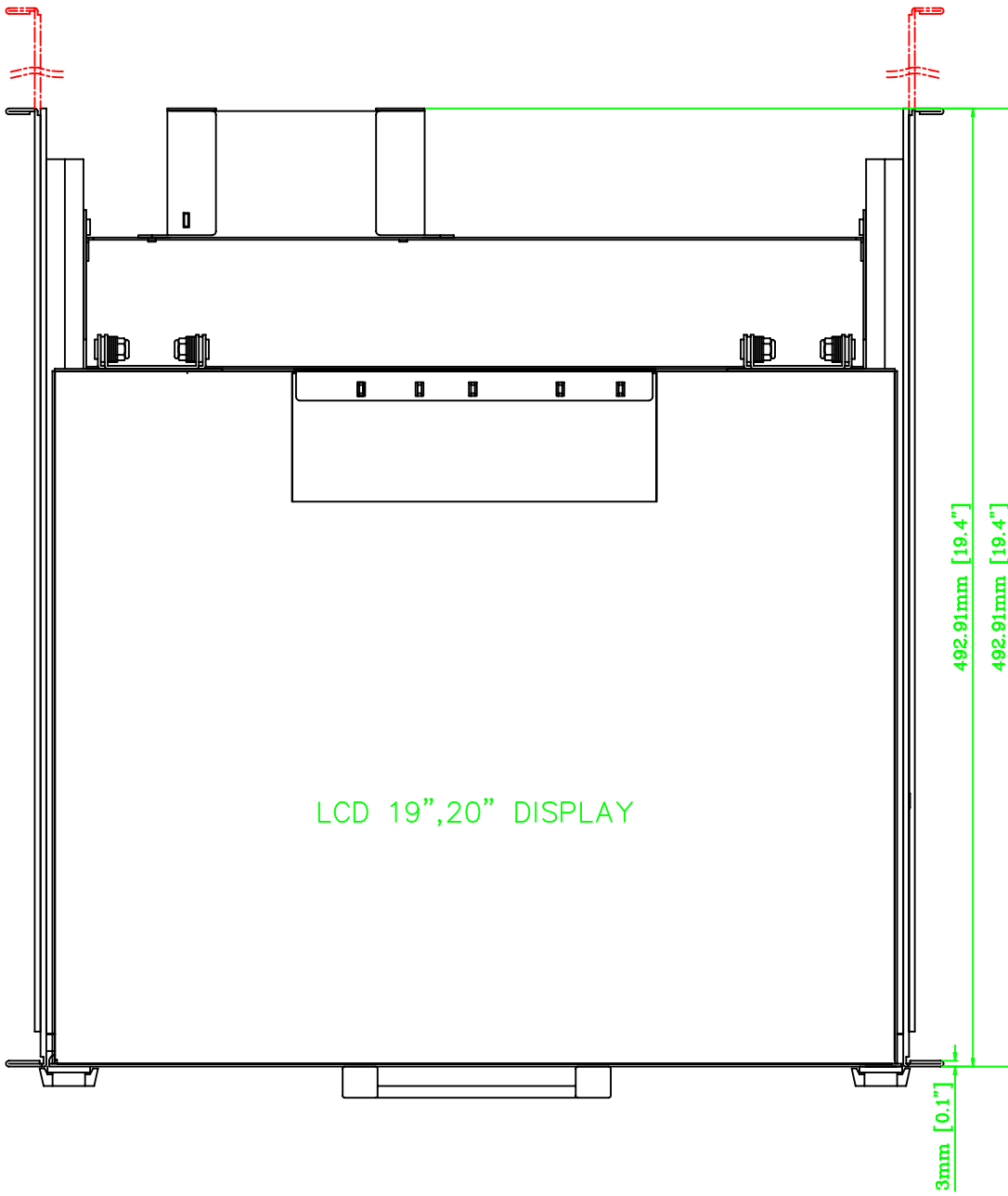
**DKM WR17**

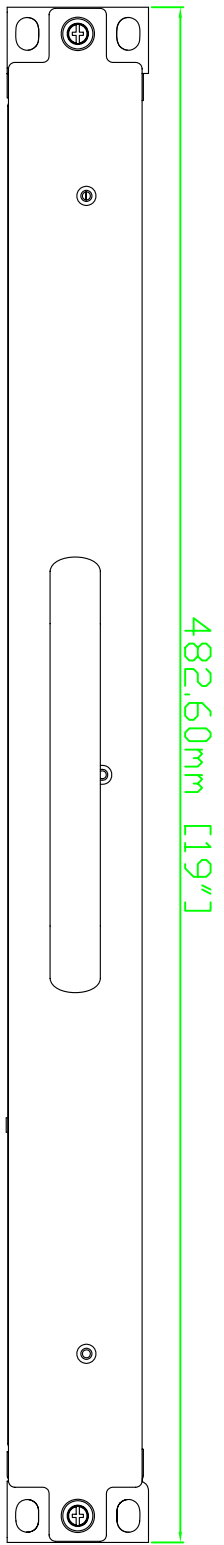


**DKM UX20M**









44.40mm [1.75"]

