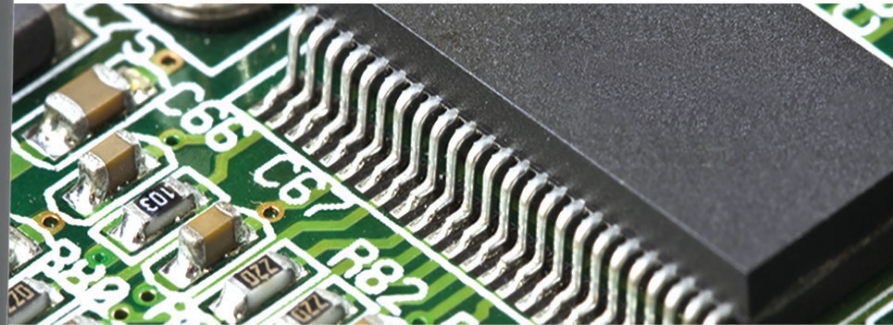


VC-2MC-M/C 150/340

VC-4MC-M/C 80/180

Preliminary VC-12MC-M/C 60, *Preliminary* VC-12MX-M/C 240

UP TO 12 MEGAPIXELS RESOLUTIONS, GLOBAL ELECTRONIC SHUTTER,
HIGH-SPEED CMOS DIGITAL CAMERA



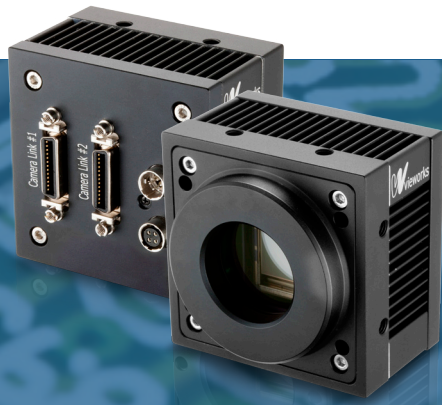
VC Series cameras are ultra high-speed industrial digital cameras with frame rates up to 340 frames per second. Equipped with the latest global shutter CMOS image sensor technology available today, these cameras provide flexible selection in resolution and frame rate which meets the requirements of many industrial and scientific applications.

Main Features

- * 2M/4M/12M Megapixel Resolution
- * CMOSIS High-Speed Progressive Scan CMOS Image Sensor
- * Full Camera Link Interface with 8 bit or 10 bit Data Output
- Preliminary* * CoaXpress Interface up to Quadruple Digital Output Ports
- * Fixed Pattern Noise Correction
- * Field Upgradable Firmware
- * Pixel Defect Correction

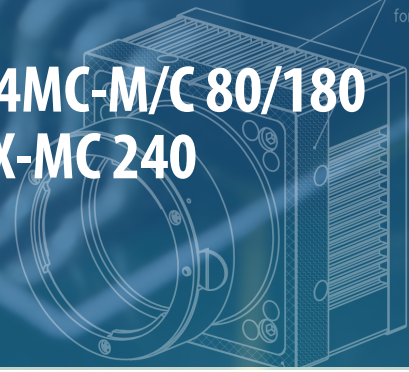
Applications

- * Machine Vision Inspection
- * Research and Scientific Imaging
- * Microscopy and Metrology



VC-2MC-M/C 150/340, VC-4MC-M/C 80/180 *Preliminary* VC-12MC-M/C 60, *Preliminary* VC-12MX-M/C 240

UP TO 12 MEGAPIXELS RESOLUTIONS,
 GLOBAL ELECTRONIC SHUTTER,
 HIGH-SPEED CMOS DIGITAL CAMERA

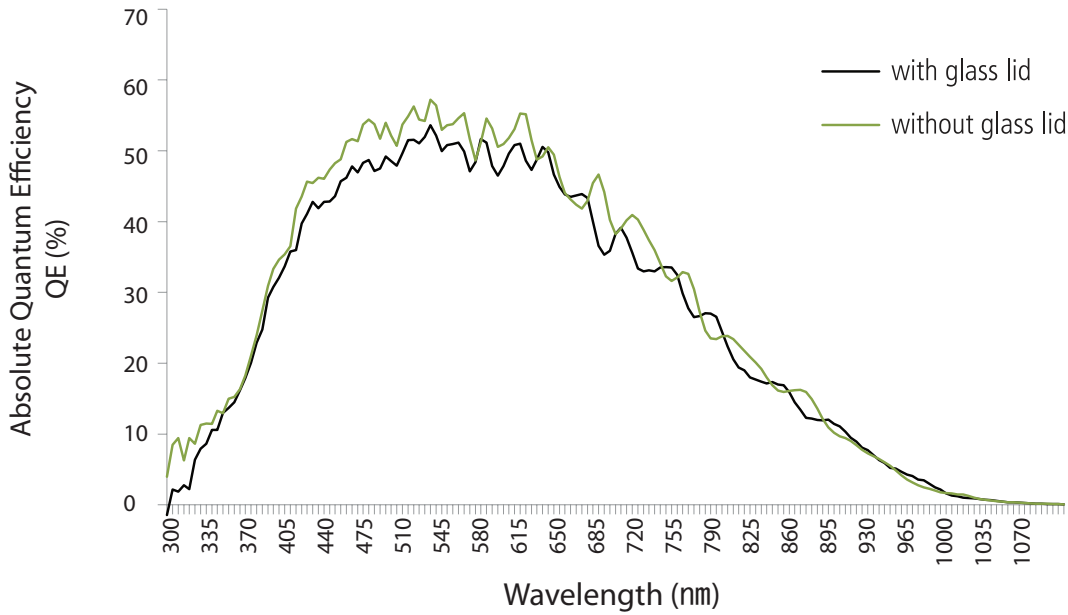


Specifications

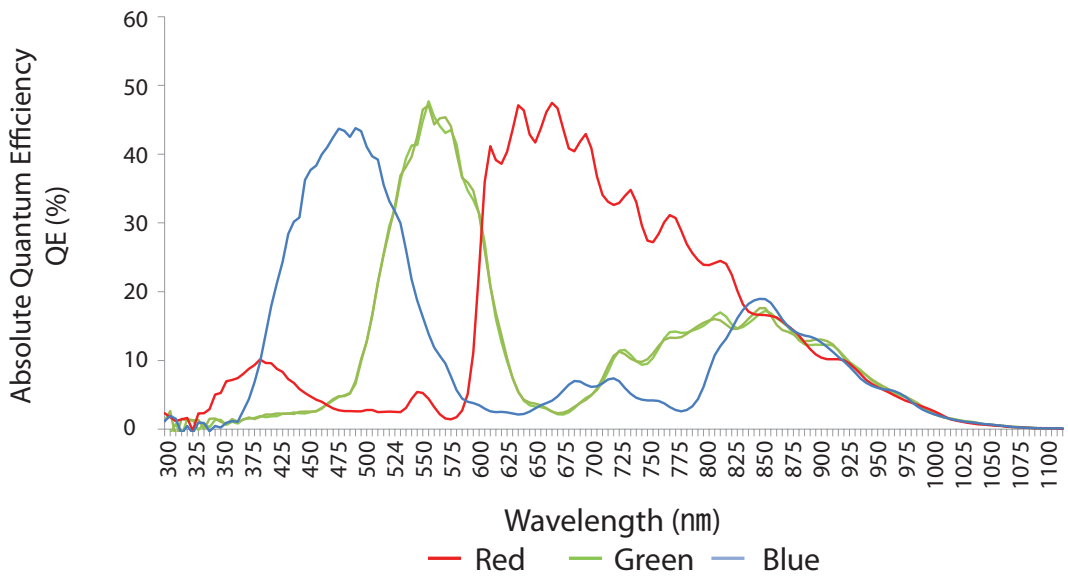
Model	VC-2MC-M/C 150	VC-2MC-M/C 340	VC-4MC-M/C 80	VC-4MC-M/C 180	<i>Preliminary</i> VC-12MC-M/C 60	<i>Preliminary</i> VC-12MX-M/C 240	
Resolution (H × V)	2048 × 1088		2048 × 2048		4096 × 3072		
Sensor (CMOSIS)	CMV 2000		CMV 4000		CMV 12000		
Sensor Size (Optical Format)	11.26 mm × 5.98 mm (2/3")		11.26 mm × 11.26 mm (1")		22.5 mm × 16.9 mm		
Sensor Type	High Speed CMOS Image Sensor						
Pixel Size	5.5 μm × 5.5 μm						
Interface	Camera Link					CoaXpress	
Max. Frame Rate	2 Tap: 74.4 fps		2 Tap: 39.6 fps		2 Tap: 13 fps		CXP ×1: 60
	4 Tap: 148.5 fps		4 Tap: 78.9 fps		4 Tap: 25 fps		CXP ×2: 120
	8 Tap: N/A	8 Tap: 295.4 fps	8 Tap: N/A	8 Tap: 157.1 fps	8 Tap: 51 fps		CXP ×4: 240
	10 Tap: N/A	10 Tap: 337.6 fps	10 Tap: N/A	10 Tap: 179.5 fps	10 Tap: 64 fps		(Based on 6.25 Gbps for each channel)
Transfer Time	2 Tap: 13.44 ms		2 Tap: 25.3 ms		2 Tap: 77 ms		CXP ×1: 17 ms CXP ×2: 8 ms CXP ×4: 4 ms
	4 Tap: 6.73 ms		4 Tap: 12.67 ms		4 Tap: 40 ms		
	8 Tap: N/A	8 Tap: 3.38 ms	8 Tap: N/A	8 Tap: 6.37 ms	8 Tap: 21 ms		
	10 Tap: N/A	10 Tap: 2.96 ms	10 Tap: N/A	10 Tap: 5.58 ms	10 Tap: 16 ms		
Pixel Data Format	8 bit (2/4 Tap)	8bit(2/4/8/10Tap)	8 bit (2/4 Tap)	8bit(2/4/8/10Tap)	8bit(2/4/8/10Tap)		8 bit or 10 bit
	10 bit (2/4 Tap)	10 bit (2/4 Tap)	10 bit (2/4 Tap)	10 bit (2/4 Tap)	10 bit (2/4 Tap)		
Electronic Shutter	Global Shutter						
Data Output Pixel Clock Speed	85 MHz					TBD	
Trigger Mode	Free-Run, Trigger Programmable Exposure Time and Trigger Polarity						
Dynamic Range	60 dB						
Dimension / Weight	68 mm × 68 mm × 54 mm, 420 g					TBD	
Temperature	Operating: 0°C ~ 40°C, Storage: -30°C ~ 65°C						
Lens Mount	C or F-mount						
Power	10 ~ 14 V DC, MAX. 6 W						
Configuration Software	Configurator						

Quantum Efficiency Curves

Monochrome with Microlens



Color with Microlens



Ordering Scheme

VC - 12MC - M 60 E0

Series VC Series	Sensor Options E0 - CMOSIS
Sensor Resolution 2M - 2 Megapixels 4M - 4 Megapixels 12M - 12 Megapixels	Frame Rate 60 - 60 fps 80 - 80 fps 150 - 150 fps 180 - 180 fps 240 - 240 fps 340 - 340 fps
Interface C - Camera Link X - CoaXpress	Mono / Color M - Monochrome C - Color

Preliminary

Preliminary

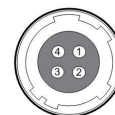
Connector Specification

Power



1 2 3 : +12V DC, 4 5 6 : GND
(HR10A-7R-6PB)

Control

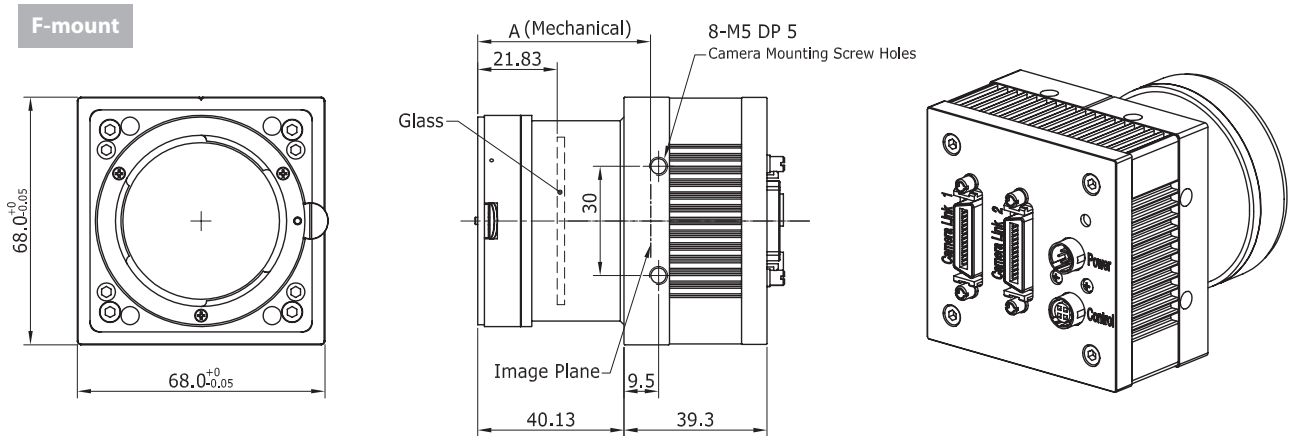
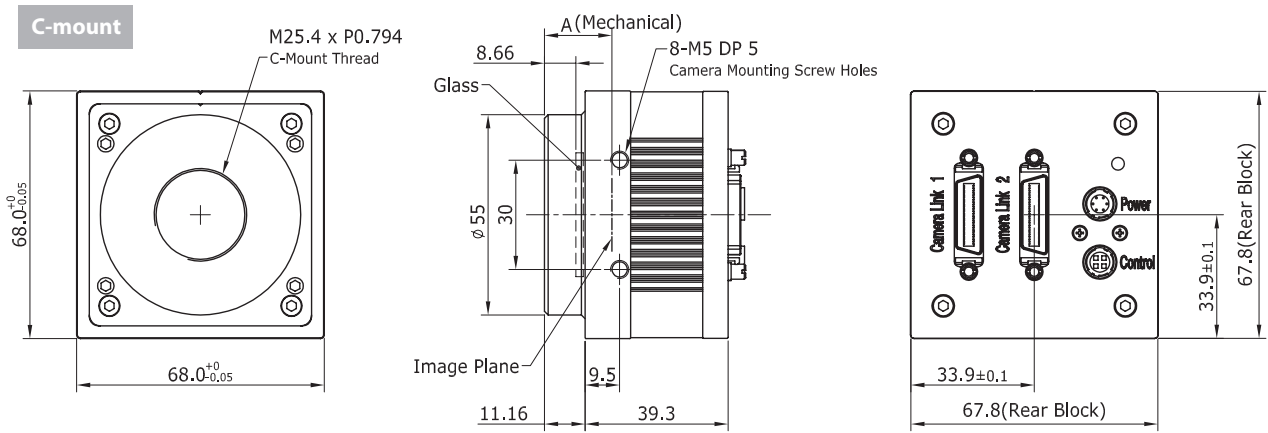


1 : Trigger IN+, 2 : Trigger IN-
3 : Strobe OUT- (GND), 4 : Strobe OUT+
(HR10A-7R-4SB)

Connectors on camera body

Mechanical Dimensions

Unit : mm



Reproduction in whole or in part without written permission is prohibited. Vieworks Co., Ltd. is not responsible for any technical or typographical errors and reserves the right to make changes to products, specifications and documentation without prior notice.

RA14-11A-015



Société SAIS
2 rue Henri Janin
78470 ST REMY LES CHEVREUSE

Tel : 09 54 16 23 53 - Fax : 01 30 47 93 37

contact@sacasa.info - www.sacasa.info