

Triple Screen LCD Console Drawers

Optimize rack space. Maximize rack monitoring

DVI-D-USB & VGA-USB, Audio, Hub

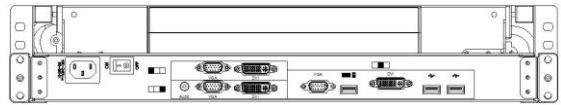


Features

- 2U 17.3 inch widescreen Triple LCD Console Drawer
- Triple DVI & VGA Port
- 1920 x 1200 native WUXGA Ultra high resolution
- Support FHD with 1080p resolution.
- Front 1xUSB, Rear 2xUSB 2.0 Type A, Sharing USB peripheral Device for computer (ex, flash disk, hard driver, KB/Mouse)
- 104-key keyboard with touch pad mouse.
- USB 2.0 Keyboard & Mouse
- Self-locking and auto release rails for ultra convenience.
- Build in 2x 2 watts speakers

Option

- Composite Video input
- HDMI or Display Port input
- 3G / HD / SD –SDI Broadcast grade input
- 48V, 24V or 12V DC Power

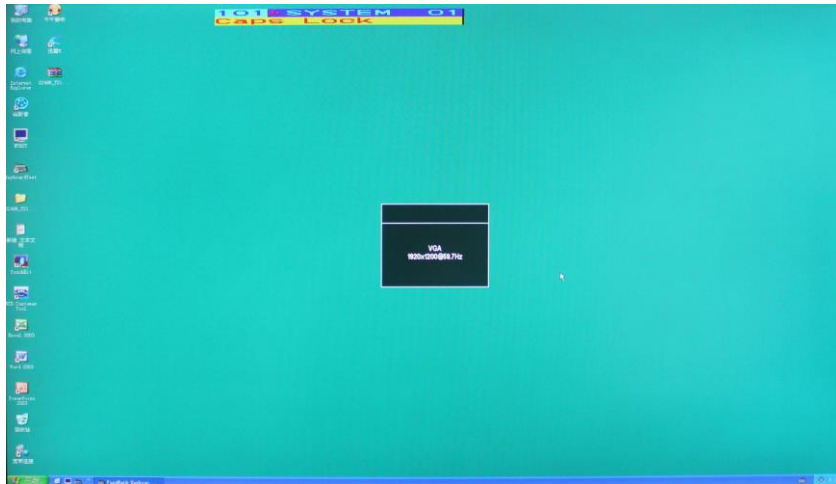


Rear of KVM-1701W-T3

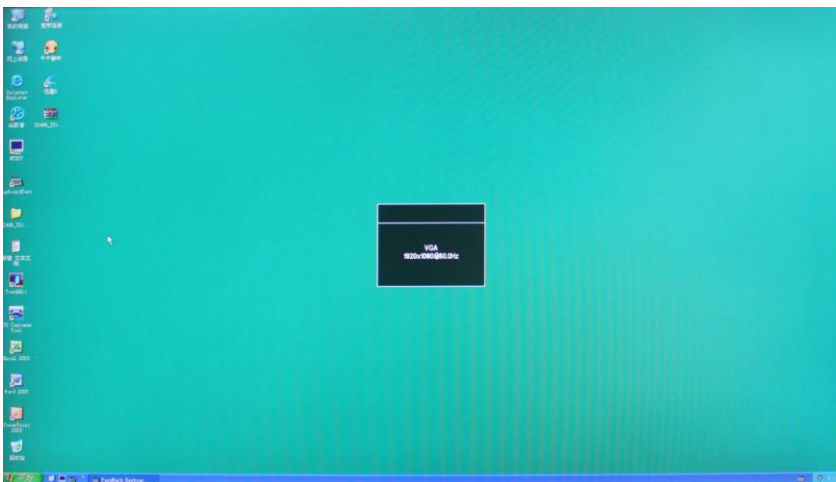
Part No.		KVM-1701W-T3
No. of ports		1
KVM Connectors		3 x DVI-D & 3x VGA / 1 x USB for KB & Mouse
LCD	Size	Triple 17.3 inch FULL HD display
	Backlight	LED
	Resolution	1920*1080 (support resolution up to 1920*1200)
	Max.color	262K
	Luminance	300 cd/m2
	View Angel (H/V)	140 / 120
	Contrast Ratio	650 : 1
Port Selection		N/A
USB HUB		Yes , Front x1 & Rear x 2 USB 2.0 Type A for USB Peripheral Device
Audio		1 x 3.5mm Audio jack
KB/Mouse Emulation		USB 2.0
Rack Depth (rack cabinet front rails to rear rails)		600mm to 1100mm
Power		100-240V AC 50/60Hz via IEC Type power cord
Environment		Operation temp: 0 to 50°C Storage temp: -20 to 60°C Humidity: 10% - 90%, non-condensing Shock: 10G acceleration (11ms duration) Vibration: 17 to 500Hz 1G PTP
Physical Dimensions (W x H x D) / Net Weights (KGs)		443x84x 580mm / 18.5
Packing Dimensions (W x H x D) / Gross weights (KGs)		735x235x590mm / 22.0
Accessory		
KVM-1701W-T3	1.8meter IEC Type Power Cord x1 , 1.8meter DVI Cable x3 , 1.8meter VGA Cable x3 , 1.8meter USB Cable x1 ,1.8meter Audio Cable x1	

Display present on different resolution

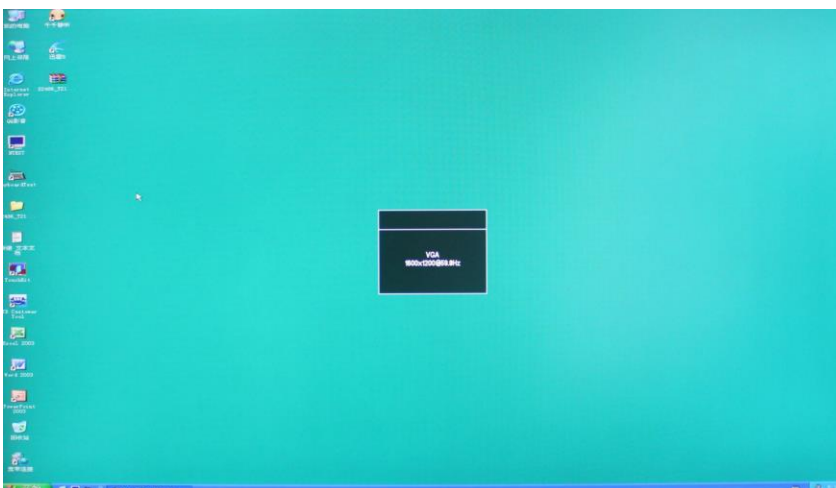
Resolution 1920 x 1200



Resolution 1920 x 1080



Resolution 1600 x 1200



102 route de Limours - DOMAINE DE ST PAUL - BAT
A6 - Bureau 3
78470 ST REMY LES CHEVREUSE
Tel : 09 54 16 23 53 - Fax : 09 59 16 23 53
www.sacasa.info - contact@sacasa.info

Rear of KVM-1701W-T3

