



# Combo DB15 LCD Console Drawers

Optimize rack space. Maximize rack monitoring

High Resolution Short Depth Version



Our range of LCD console drawers provides a variety of features that simplify to access servers to making system monitoring , troubleshooting and software upgrades.

The self-locking rails when in the fully extended open position and the ultra convenient auto lock release when the LCD panel is closed, make for simple and hassle free operation.

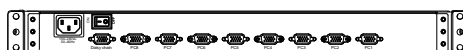
Available with 17.3" Full HD A-Grade LCD panel, combo DB15 single , 8 or 16 port integrated KVM switch.

## Features

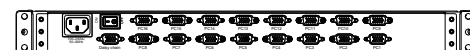
- Support combo interface, VGA-USB & VGA-PS/2.
- Short depth design suit for mobile rack and limited space.
- Durable 88-key keyboard and touch pad.
- Quick and simple installation.
- Self-locking and auto release rails for ultra convenience.
- Port selection via push buttons or On-Screen-Display (OSD).
- Dedicated daisy chain port to expand up to 240 servers.



Rear of KVM-1701SW-AST-M2



Rear of KVM-1708SW-AST-M2



Rear of KVM-1716SW-AST-M2

Part No.	KVM-1701SW-AST-M2	KVM-1708SW-AST-M2	KVM-1716SW-AST-M2
Direct no. of Computers	1	8	16
Maximum no. of Computers	1	232(Daisy Chain)	240(Daisy chain)
LCD	Size	17.3"	
	Backlight	LED	
	Resolution	1920*1080 Full HD ( support resolution up to 1920x1200 )	
	Max.color	262K	
	Luminance	300cd/m2	
	View Angel (H/V)	140 / 120	
	Contrast Ratio	650 : 1	
Port Selection	N/A	Push Button,OSD or Hotkey	
USB Local console / Expansion Slot	N/A		
KB/Mouse Emulation	USB & PS2		
Rack Depth	380mm to 620mm ( rack cabinet front rails to rear rails )		
Power	100-240V AC 50/60Hz via IEC Type power cord		
Environment	Operation temp: 0 to 50°C		
	Storage temp: -20 to 60°C		
	Humidity: 10% - 90%, non-condensing		
	Shock: 10G acceleration ( 11ms duration) Vibration: 17 to 500Hz 1G PTP		
Physical Dimensions / Net Weights	443x42x457.2mm (WxHxD) /14KG		
Packing Dimensions / Gross weights	605x168x700mm (WxHxD) /17KG		

### Accessory

1.8meter IEC Type Power Cord ( 1.8meter VGA& PS2Cable + 1.8meter USB A Type Cable for KVM-1701SW-AST-M2 )

### Option Relate Item

CVU-018	1.8meter 2-in-1 KVM Cable-USB&VGA	CVP-018	1.8meter 3-in-1 KVM Cable-PS/2&VGA
CVU-030	3.0meter 2-in-1 KVM Cable-USB&VGA	CVP-030	3.0meter 3-in-1 KVM Cable-PS/2&VGA
CVU-050	5.0meter 2-in-1 KVM Cable-USB&VGA	CVP-050	5.0meter 3-in-1 KVM Cable-PS/2&VGA

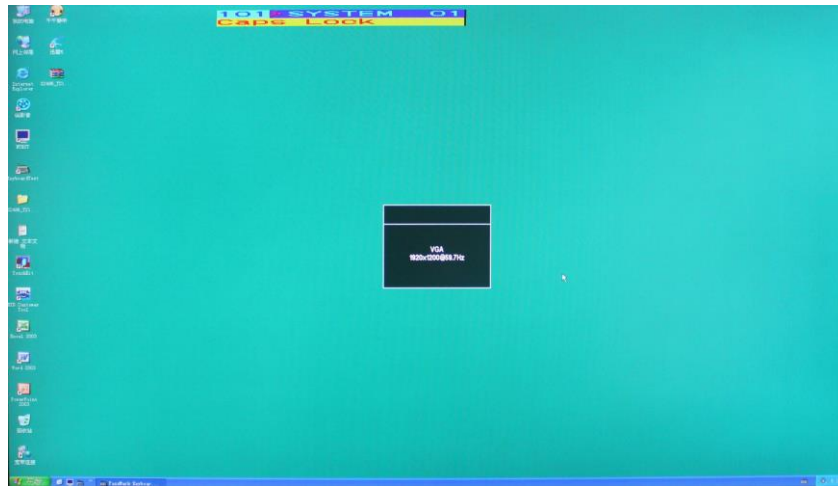
# Combo DB15 LCD Console Drawers

Optimize rack space. Maximize rack monitoring

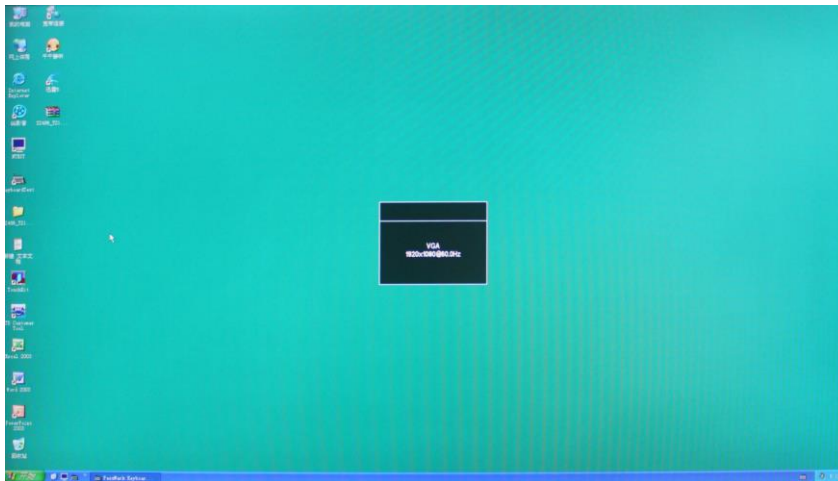
High Resolution Short Depth Version

## Display present on different resolution

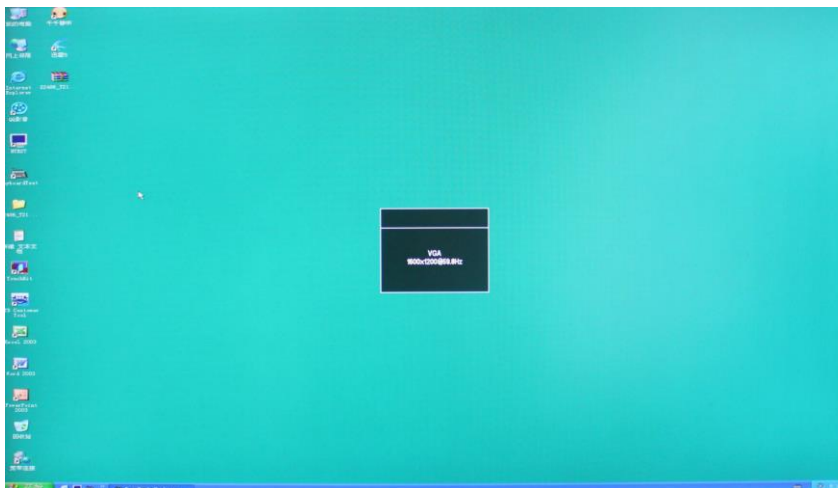
Resolution 1920 x 1200



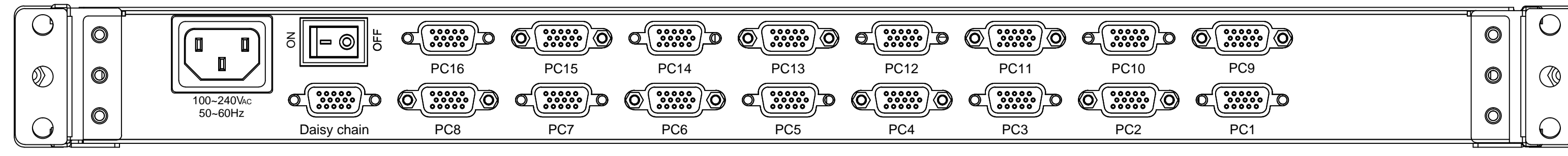
Resolution 1920 x 1080



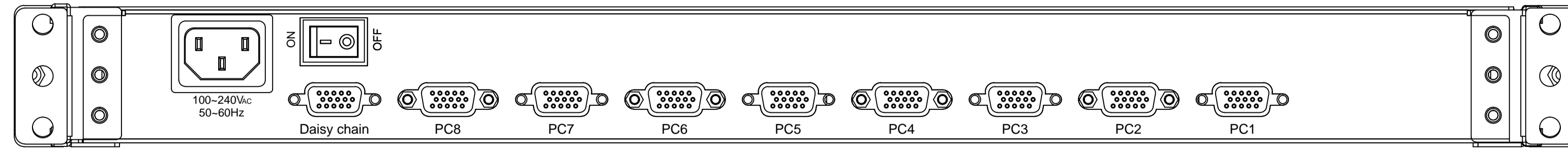
Resolution 1600 x 1200



Rear of KVM-1716SW-AST-M2



Rear of KVM-1708SW-AST-M2



Rear of KVM-1701SW-AST-M2

