



# Dual Rail High Resolution LCD Console Drawers

Optimize rack space. Maximize rack monitoring  
DVI-D-USB & VGA-USB, Audio, Hub



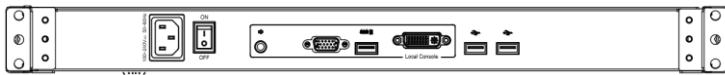
(USB Port for device access)

## Features

- Dual slide rail capable LCD screen and keyboard tray independent operate.
- 1U 17.3 inch widescreen LCD Console Drawer
- DVI & VGA Port
- 1920 x 1080 high resolution
- Support FHD with 1080p resolution.
- Front 1xUSB, Rear 2xUSB 2.0 Type A, Sharing USB peripheral Device for computer (ex, flash disk, hard driver, KB/Mouse)
- 104-key keyboard with touch pad mouse.
- USB 2.0 Keyboard & Mouse
- Self-locking and auto release rails for ultra convenience.
- Build in 2x 2 watts speakers

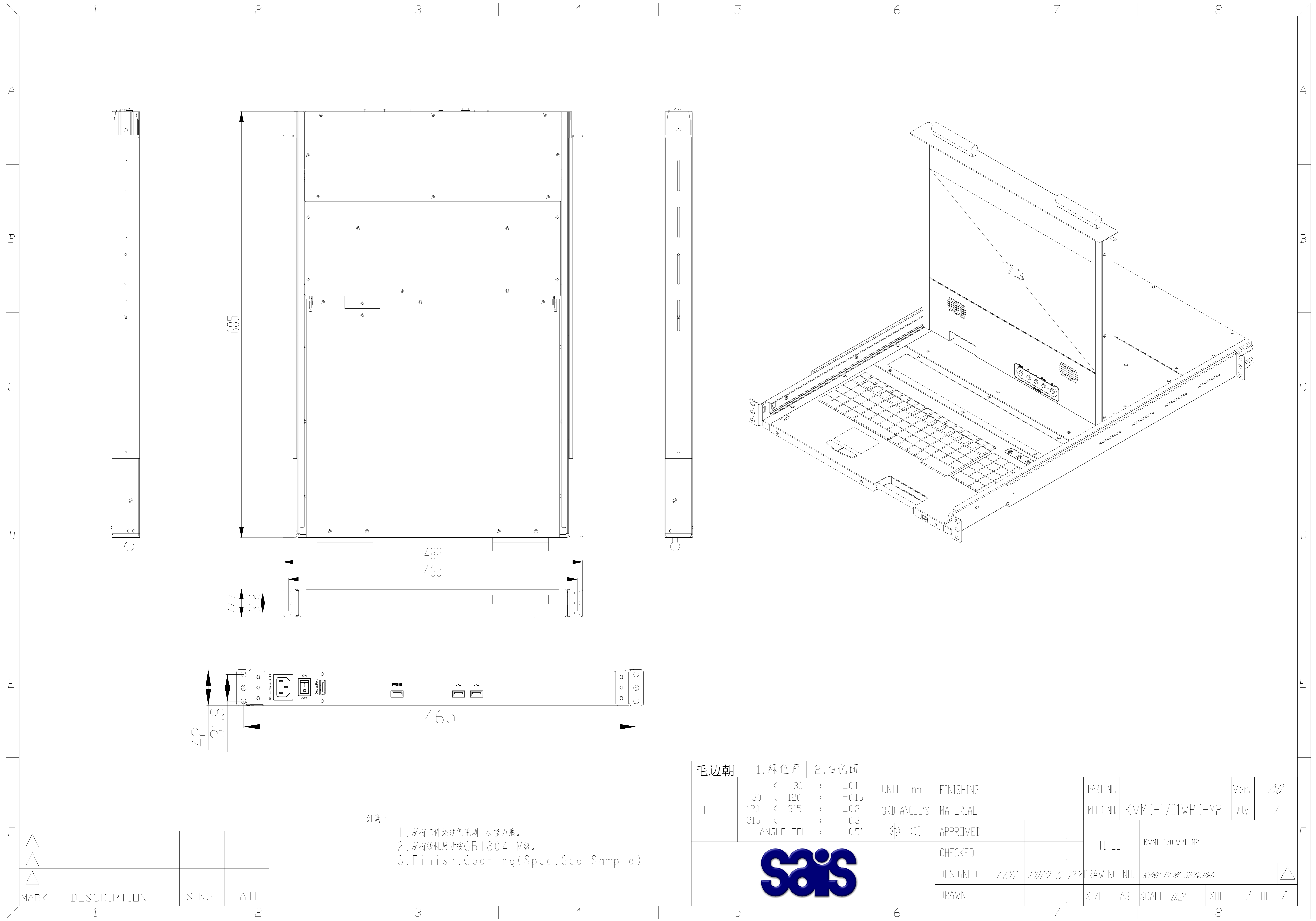
## Options

- Composite Video input
- HDMI or Display Port input
- 3G / HD / SD –SDI Broadcast grade input
- 48V, 24V or 12V DC Power



Rear of KVMD-1701WPD-M2

Part No.		KVMD-1701WPD-M2
Direct no. of Computers		1
KVM Connectors		DVI-D, VGA, USB
LCD	Size	17.3"
	Backlight	LED
	Resolution	1920*1080 Full HD ( support resolution up to 1920x1200 )
	Max.color	262K
	Luminance	300cd/m2
	View Angel (H/V)	140 / 120
	Contrast Ratio	650 : 1
USB HUB		1x Front , 2x Rear USB 2.0 Type A for peripheral USB devices
Touch Screen		YES , for option ( Driver needed )
KB/Mouse Emulation		USB 2.0
Audio		1 x 3.5 mm audio jack
Rack Depth		500mm to 1100mm ( rack cabinet front rails to rear rails )
Power		100-240V AC 50/60Hz via IEC Type power cord
Environment		Operation temp: 0 to 50°C Storage temp: -20 to 60°C Humidity: 10% - 90%, non-condensing Shock: 10G acceleration ( 11ms duration) Vibration: 17 to 500Hz 1G PTP
Physical Dimensions / Net Weights		482x44.4x685mm (WxHxD) / 13.0KG
Packing Dimensions / Gross weights		710x185x910mm (WxHxD) / 20.0KG
<b>Accessories</b>		
1.8 meter IEC Type Power Cord , 1.8 meter DVI-D Cable , 1.8 meter VGA Cable , 1.8 meter USB Cable , 1.8 meter Audio Cable (one each)		



注意：  
 1. 所有工件必须倒毛刺 去接刀痕。  
 2. 所有线性尺寸按GB1804-M级。  
 3. Finish: Coating (Spec. See Sample)

毛边朝	1、绿色面	2、白色面								
TOL	< 30	: ±0.1	UNIT : mm	FINISHING		PART NO.		Ver.	A0	
	30 < 120	: ±0.15	3RD ANGLE'S	MATERIAL		MOLD NO.	KVMD-1701WPD-M2	Q'ty	1	
	120 < 315	: ±0.2	APPROVED			TITLE	KVMD-1701WPD-M2			
	315 <	: ±0.3	CHECKED			DESIGNED	LCH	2019-5-23	DRAWING NO.	KVMD-19-M6-303V.DWG
	ANGLE TOL	: ±0.5°	DRAWN			SIZE	A3	SCALE	0.2	SHEET: 1 OF 1



MARK	DESCRIPTION	SING	DATE
△			
△			
△			