

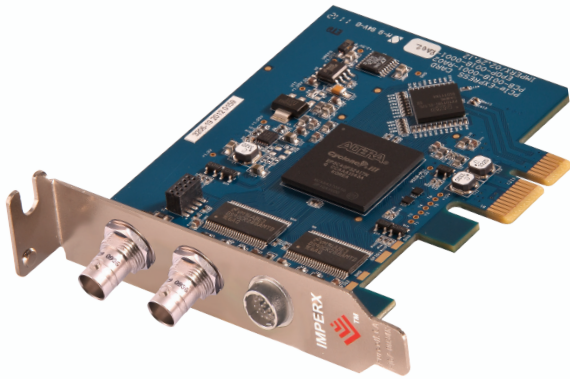


HD-SDI PCIe x1 for Desktop PCs

VCE-HDPCIe01

Acquisition from an SD or HD-SDI video source.

Advanced features: Look up tables, histograms, RGB gain/offset with auto-white balance...

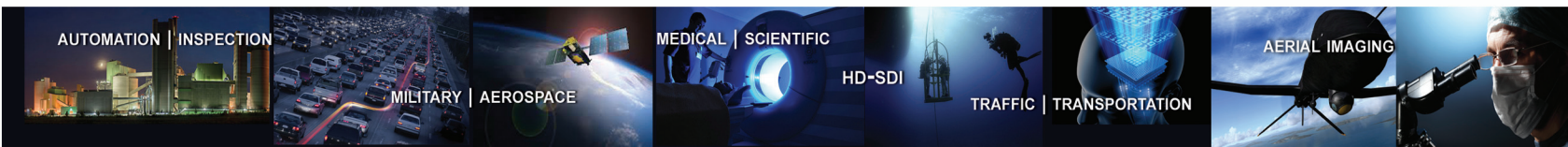


IMPERX HD-SDI PCIe x1 is a professional level PCI Express video capture card that enables users to view and store in real time mega pixel video images from any standard HD-SDI video source onto desktop PC computers. IMPERX HD-SDI PCIe x1 is capable of capturing single or multiple frames and standard AVI clips from any SD or HD-SDI compliant video source. Each captured frame can be stamped with a user message along with the date and time of capture. A full software suite that includes drivers, C/C++, SDK, and an application program is provided with each IMPERX HD-SDI PCIe x1 (VCE-HDPCIe01) card.

Features

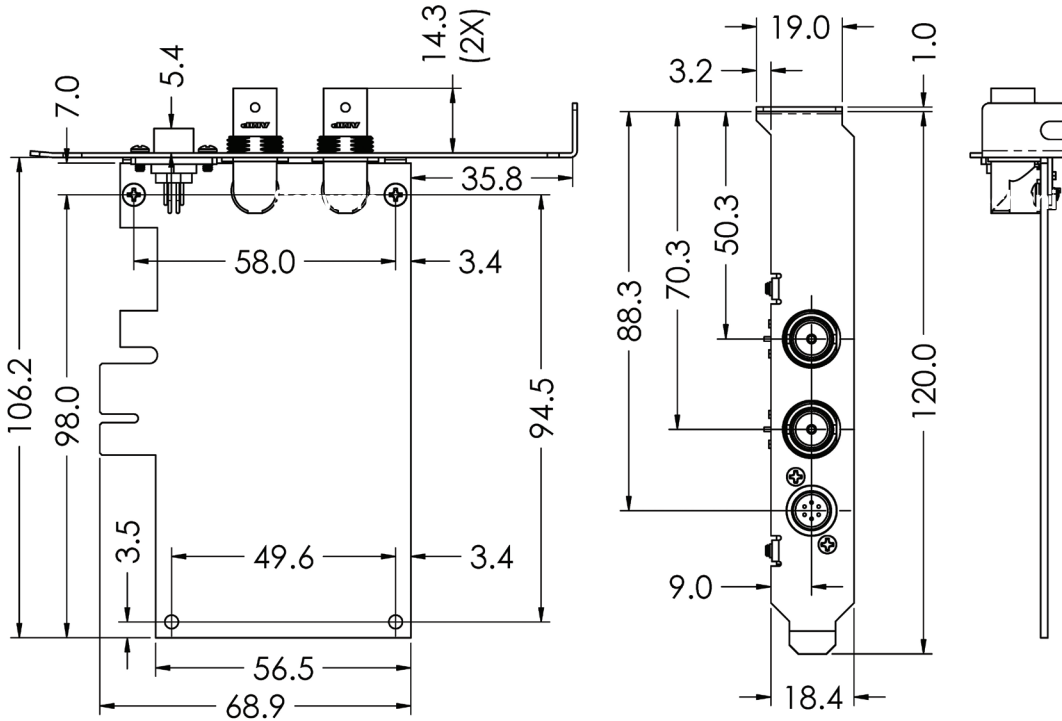
- PCIe x1 compliant providing 2.5 Gbps of bandwidth
- SD and HD-SDI formats for 720p, 1080i and 1080p video
- SMPTE 292M serial interface and SMPTE 274M/296M framing
- SD or HD-SDI real time video and audio acquisition with SDI loop-through
- Audio acquisition of two 24 bit channels @ 48KHz
- A second BNC connector provides an SDI loop-through capability
- Bi-directional RS232/RS485 serial interface for camera control
- 16/20 bit YCrCb 4:2:2 or 24-bit RGB formatting
- Intelligent scatter/gather DMA for fast, efficient use of PCIe x1 bandwidth and system memory
- Flow-through pipelined architecture for low latency
- On board color space conversion
- Dynamic buffer allocation
- Selectable window sizes
- Adjustable RGB brightness and auto white balance
- Programmable RGB lookup tables and gamma correction
- Captures single, multiple frames or AVI clips
- Normal or delay capture
- Date, time and text overlay
- RAW, BMP, TIFF or adjustable JPEG file format
- Image viewer with DVR controls
- Plug-and-Play operation with hot insertion/removal
- Many advanced features including look up tables, histograms, RGB gain/offset with auto-white balance, hex pixel dump, gamma correction

Software	Application program: Full featured, intuitive, easy to use GUI Drivers: Win XP/2000/Vista/7/8, DirectX, Halcon, Adobe Premiere, Matlab SDK: C/C++, COM, .NET, ActiveX - all with sample source code
Video Source	Two 75 ohm BNC coaxial connectors (in and out) Analog SMPTE 292M serial interface operating at 1.485Gbps SMPTE 274M and SMPTE 296M framing
Communications	RS232/RS485 ASYNC UART for camera control 6-pin Hirose style connector
Power	3.3V DC +/-5%, 500 mA steady 1.65W constant power
Environmental	Operating temperature: -40°C to +85°C Relative humidity: 90% non-condensing
MTBF	>372,000 hours @ 50°C (MIL-STD-785B, MIL-HDBK-217F)
Regulatory	FCC part 15, Class B, CE, RoHS
Mechanical	Low profile PCI Express form factor Weight 1.91 oz., 47g

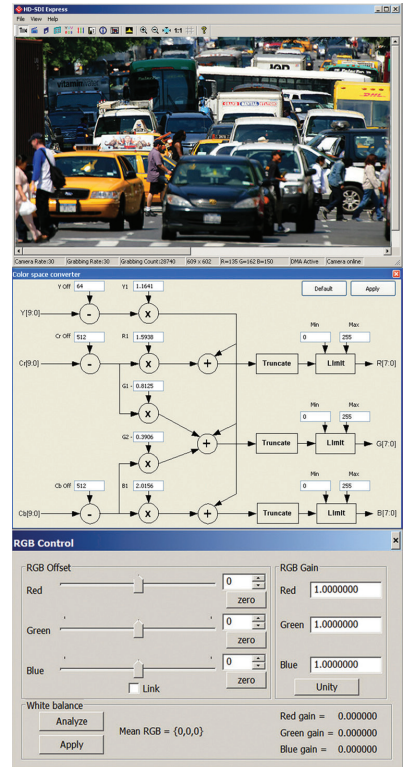
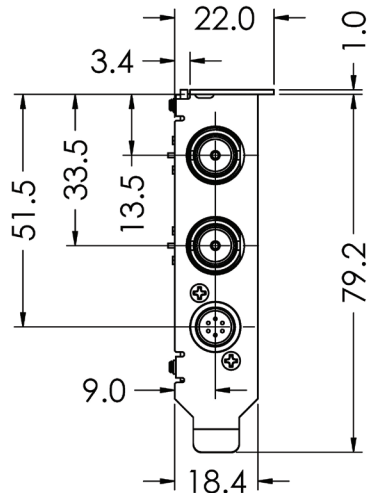




Order: VCE-HDPCIe01



ALSO SUPPLIED WITH LOW PROFILE BRACKET



Société SAIS
 102 route de Limours - DOMAINE DE ST PAUL - BAT 14 bureau 12
 78470 ST REMY LES CHEVREUSE
 Tel : 09 54 16 23 53 - Fax : 09 59 16 23 53
 contact@sacasa.info - www.sacasa.info