



VCE-HDmPCIe01

HD-SDI Mini-PCIe for Desktop PCs

*Acquisition from an SD or HD-SDI video source.
Advanced features: Look up tables, histograms, RGB gain/offset with auto-white balance...*

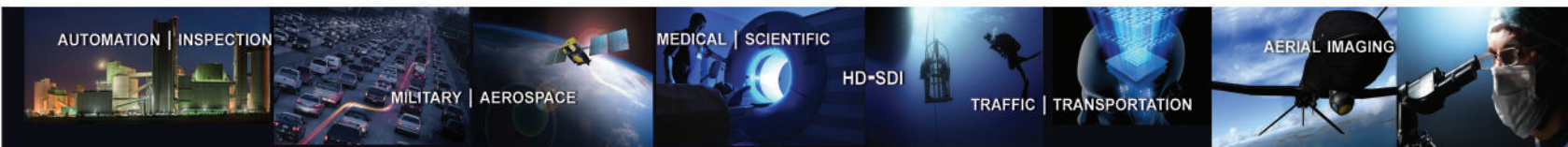


IMPERX HD-SDI Mini-PCIe is a professional level PCI Express video capture card that enables users to view and store in real time mega pixel video images from any standard HD-SDI video source onto desktop PC computers. IMPERX HD-SDI Mini-PCIe is capable of capturing single or multiple frames and standard AVI clips from any SD or HD-SDI compliant video source. Each captured frame can be stamped with a user message along with the date and time of capture. A full software suite that includes drivers, C/C++, SDK, and an application program is provided with each IMPERX HD-SDI Mini-PCIe (VCE-HDmPCIe01) card.

Note: The physical dimensions of this card are larger than a standard mini-PCIe card. As such, it is not compliant with the PCI Express® Mini Card Electromechanical Specification.

Features

- Mini-PCIe compliant providing 2.5 Gbps of bandwidth
 - Intelligent scatter/gather DMA for fast, efficient use of PCIe x1 bandwidth and system memory
 - SD and HD-SDI formats for 720p,1080 and 1080p video
 - SMPTE 292M serial interface and SMPTE 274M/296M framing
 - SD or HD-SDI real time video and audio acquisition with SDI loop-through
 - Audio acquisition of two 24 bit channels @ 48KHz
 - A second MCX coaxial connector provides an SDI loop-through capability
 - Bi-directional RS232/RS485 serial interface for camera control (Optional)
 - 16/20 bit YCrCb 4:2:2 or 24-bit RGB formatting
 - Flow-through pipelined architecture for low latency
 - On board color space conversion
 - Dynamic buffer allocation
 - Selectable window sizes
 - Adjustable RGB brightness and auto white balance
 - Programmable RGB lookup tables and gamma correction
 - Captures single, multiple frames or AVI clips
 - Normal or delay capture
 - Date, time and text overlay
 - RAW, BMP, TIFF or adjustable JPEG file format
 - Image viewer with DVR controls
 - Plug-and-Play operation with hot insertion / removal
 - Many advanced features including look up tables, histograms, RGB gain/offset with auto-white balance, hex pixel dump, gamma correction
- | | |
|----------------|--|
| Software | Application program: Full featured, intuitive, easy to use GUI
Drivers: Win XP/2000/Vista/7/8, DirectX, Halcon, Adobe Premiere, Matlab
SDK: C/C++,COM, .NET, ActiveX - all with sample source code |
| Video Source | Two 75 ohm MCX coaxial connectors (in and out)
Analog SMPTE 292M serial interface operating at 1.485Gbps
SMPTE 274M and SMPTE 296M framing |
| Power | 3.3V DC +/-5%, 500 mA steady
1.65W constant power |
| Communications | RS232/RS485 ASYNC UART for camera control
6-pin Hirose style connector (Optional) |
| Environmental | Operating temperature: -40°C to +85°C
Relative humidity: 90% non-condensing |
| MTBF | >372,000 hours @ 50°C (MIL-STD-785B, MIL-HDBK-217F) |
| Regulatory | FCC part 15, Class B, CE, RoHS |
| Mechanical | Low profile PCI Express form factor
Weight 1.91 oz., 47g |

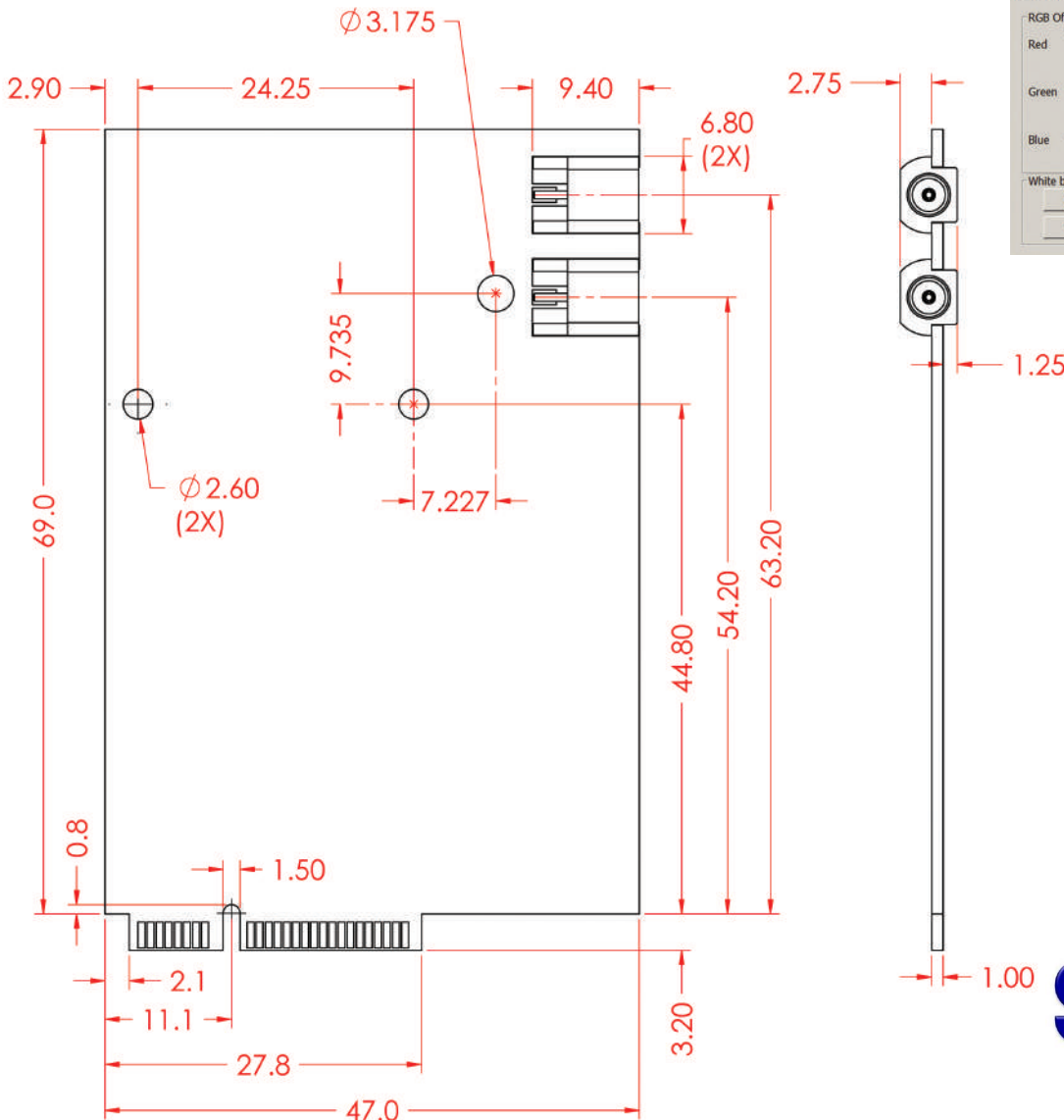
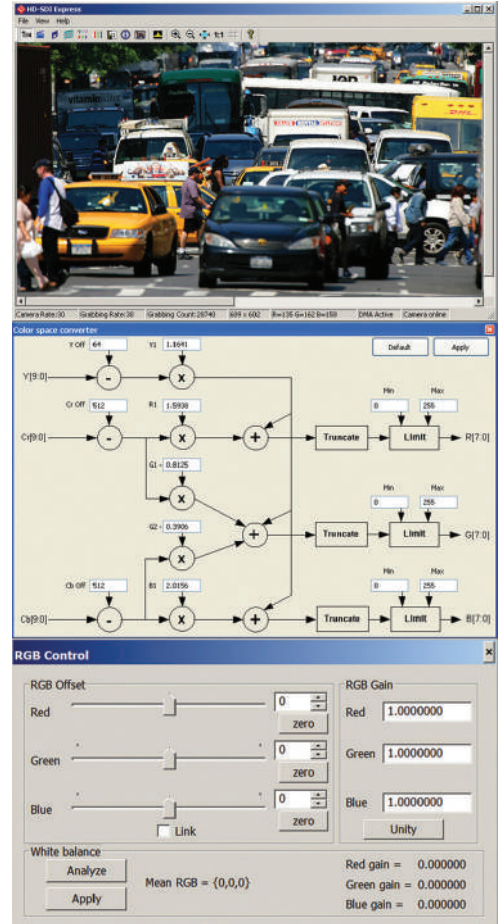




Note: The physical dimensions of this card are larger than a standard mini-PCIe card. As such, it is not compliant with the PCI Express® Mini Card Electromechanical Specification.

Order: VCE-HDmPCIe01

For specific details and ordering information, consult the **HD-SDI Express** user's manual



Société SAIS
 102 route de Timours - DOMAINE DE ST PAUL - BAT 14 bureau 12
 78470 ST REMY LES CHEVREUSE
 Tel : 09 54 16 23 53 - Fax : 09 59 16 23 53
 contact@sacasa.info - www.sacasa.info