



Camera Link® ExpressCard/34 for Laptops

VCE-CLEX02

Acquisition from a single Base Camera Link camera

Advanced features: Look up tables, histograms, RGB gain/offset with auto-white balance



IMPERX FrameLink ExpressCard/34 is a professional level ExpressCard video capture card that enables users to view and store in real time mega pixel video images from Camera Link sources onto laptop computers. IMPERX FrameLink ExpressCard/34 is capable of capturing single or multiple frames and standard AVI clips from a single Base Camera Link compliant video source. Each captured frame can be stamped with a user message along with the date and time of capture. A full software suite that includes drivers, C/C++, SDK, and an application program is provided with each IMPERX FrameLink VCE-CLEX02 card.

Features

- ExpressCard/34 compliant providing 2.5 Gbps of bandwidth
- Built in programmable logic controller
- Intelligent scatter/gather DMA for fast, efficient use of PCIe bandwidth and system memory
- Flow-through pipelined architecture for low latency
- Built in CC pulse generators
- Unique 'auto-learn' feature automatically recognizes camera parameters and simplifies CAM file creation
- Dynamic buffer allocation
- Selectable window sizes
- Adjustable RGB brightness and auto white balance
- Bayer pattern interpolation
- Captures single, multiple frames or AVI clips
- Normal or delay capture
- Date, time and text overlay
- BMP, TIFF or adjustable JPEG file format
- Image viewer with DVR controls
- Many advanced features including look up tables, histograms, RGB gain/offset with auto-white balance, hex pixel dump, etc.

Software

- Application program: Full featured, intuitive, easy to use GUI
- Drivers: Win XP/2000/Vista/7/8, DirectX, Halcon, LabVIEW, Matlab, SDK: C/C++, .COM, .NET, ActiveX - all with sample source code

Video Source

- Uses one mini-CL (SDR/HDR) connector
- 24 video data bits plus strobes and clock
- 4 camera control bits (CC1 to CC4)
- Bi-directional serial interface

Video Format

- 1x8, 2x8, 3x8, 1x10, 2x10, 1x12, 2x12, 1x14, 1x16 and 3x8 (RGB24)
- Monochrome and color: RGB, Bayer and TRUESENSE Sparse CFA

Power

- 3.3V DC +/-5%, 500 mA steady
- 1.65W constant power

Environmental

- Operating temperature: -40°C to +85°C
- Relative humidity: 90% non-condensing
- >390,000 hours @ 50°C (MIL-STD-785B, MIL-HDBK-217F)

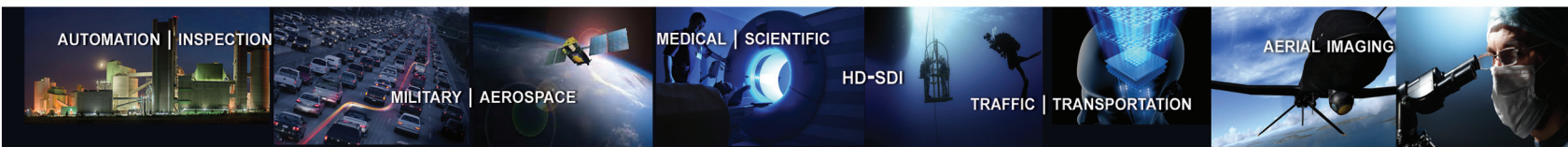
MTBF

Regulatory

- FCC part 15, Class B, CE, RoHS

Mechanical

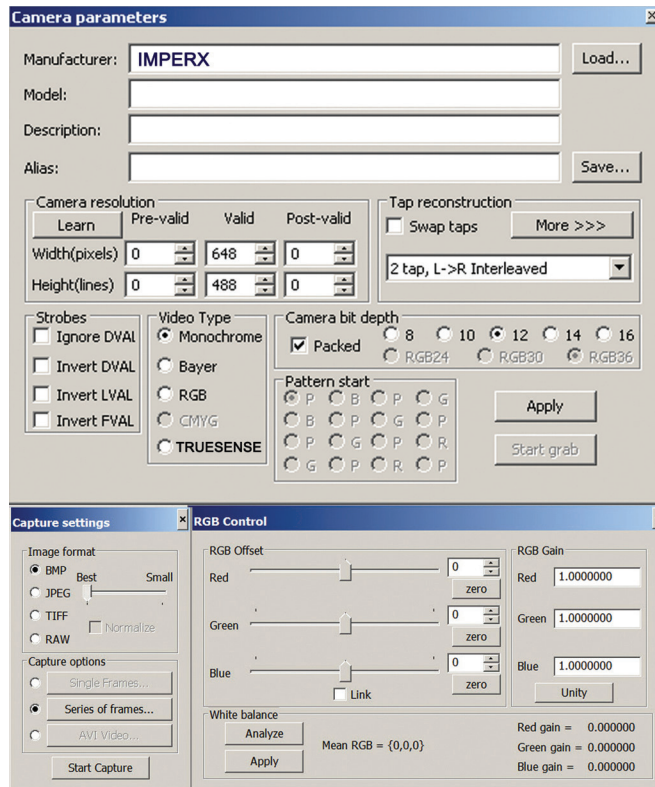
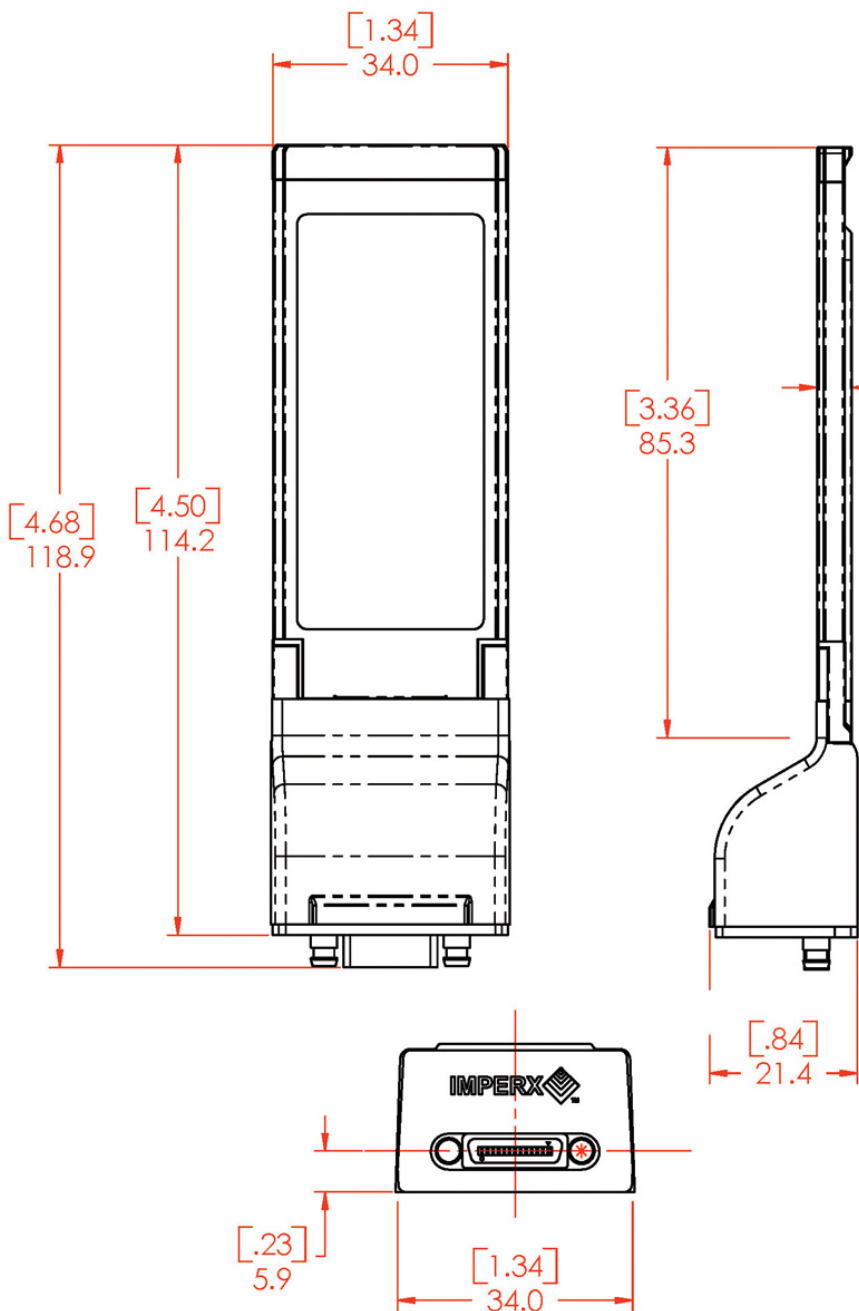
- ExpressCard/34 form factor
- Weight 1.91 oz., 36g





Order: VCE-CLEX02

For specific details and ordering information, consult the FrameLink Express user's manual



Société SAIS
 102 route de Limours - DOMAINE DE ST PAUL - BAT 14 bureau 12
 78470 ST REMY LES CHEVREUSE
 Tel : 09 54 16 23 53 - Fax : 09 59 16 23 53
 contact@sacasa.info - www.sacasa.info

