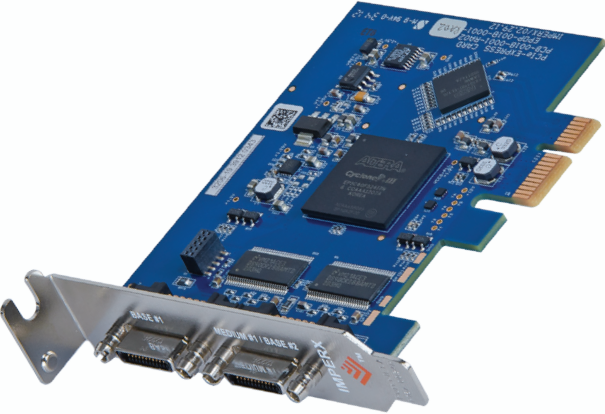


# Camera Link® PCIe x1 Card for Desktop PCs

VCE-CLPCIe01

*Simultaneous acquisition from two Base Camera Link cameras or one Medium Camera Link camera. Uses intelligent DMA for fast, efficient use of the ExpressCard bandwidth with a flow-through pipelined architecture for low latency.*



## Features

- PCIe x1 lane providing 2.5 Gbps of bandwidth
- Intelligent scatter/gather DMA for fast, efficient use of PCIe bandwidth and system memory
- Built in CC pulse generators
- Unique 'auto-learn' feature automatically recognizes camera parameters and simplifies CAM file creation
- Dynamic buffer allocation
- Selectable window sizes
- Adjustable RGB brightness and auto white balance
- Bayer pattern interpolation
- Captures single, multiple frames or AVI clips
- Normal or delay capture
- Date, time and text overlay
- BMP, TIFF, RAW or adjustable JPEG file format
- Image viewer with DVR controls
- Many advanced features including look up tables, histograms, RGB gain/offset with auto-white balance, hex pixel dump, etc.

## Software

- Application program: Full featured, intuitive, easy to use GUI
- Drivers: Win XP/2000/Vista/7/8, DirectX, Halcon, LabVIEW, Matlab
- SDK: C/C++, COM, .NET, ActiveX - all with sample source code

## Video Source

- Uses two mini-CL (SDR/HDR) connectors
- Base: 24 video data bits plus strobes and clock per channel
- Medium: 48 video data bits plus strobes and clock per channel
- 4 camera control bits (CC1 to CC4) per channel
- Bi-directional serial interface per channel

## Video Format

- Base: 1x8, 2x8, 3x8, 1x10, 2x10, 1x12, 2x12, 1x14, 1x16 and 3x8 (RGB24)
- Medium: 4x8, 3x10, 4x10, 3x12, 4x12, RGB30 and RGB36
- Monochrome and color: RGB, Bayer and TRUESENSE Sparse CFA

## Power

- 3.3V DC +/-5%, 500 mA steady
- 1.65W constant power

## Environmental

- Operating temperature: 0°C to 65°C
- Relative humidity: 90% non-condensing

## MTBF

- >330,000 hours @ 50°C

## Regulatory

- FCC part 15, Class B, CE, RoHS

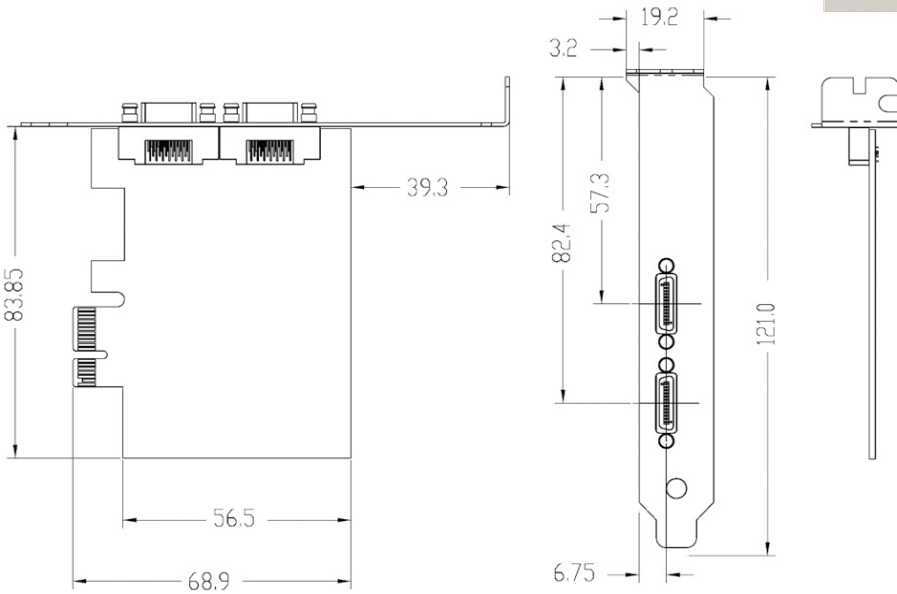
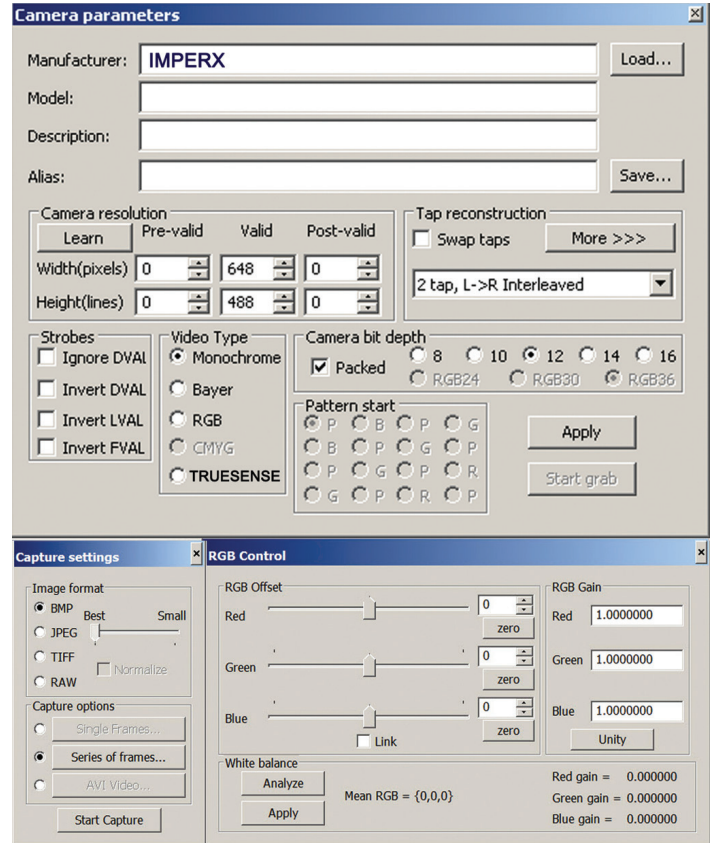
## Mechanical

- Low profile PCI Express form factor
- Weight 1.59 oz., 45g

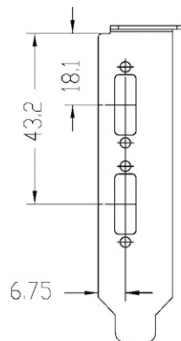
**IMPERX** FrameLink PCIe x1 is a professional level video capture card that enables users to view and store in real time mega pixel video images from Camera Link sources onto desktop computers. IMPERX FrameLink PCIe x1 is capable of capturing single or multiple frames and standard AVI clips on up to two Base or one Medium CameraLink compliant video source. Each captured frame can be stamped with a user message along with the date and time of capture. A full software suite that includes drivers, C/C++, SDK, and an application program is provided with each FrameLink VCE-CLPCIe01 card.



Order: VCE-CLPCle01



ALSO SUPPLIED WITH LOW PROFILE BRACKET



Société SAIS  
102 route de Limours - DOMAINE DE ST PAUL - BAT 14 bureau 12  
78470 ST REMY LES CHEVREUSE

Tel : 09 54 16 23 53 - Fax : 09 59 16 23 53

contact@sacasa.info - www.sacasa.info